



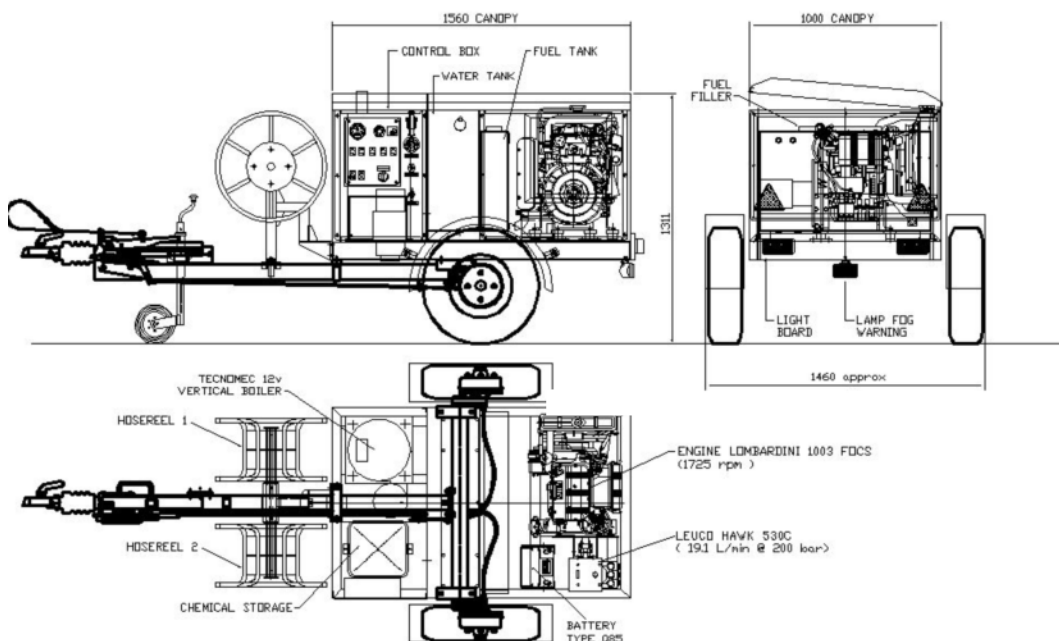
High Pressure. Cleaner Solutions.

Technical Data Sheet



- Mobile hot water steam cleaner
- Ideal for chewing gum and graffiti removal
- Single or twin hose reel options
- Easily manoeuvrable around work sites

Model	H3004D trailer unit
Pressure and Flow	3000 psi @ 4 gpm
Pump	Hawk HC530C
Engine	Lombardini 21 hp water cooled diesel
Water Tank	Single centrally mounted integral tank giving 125 litre (25 gallon) capacity
Frame	Box section steel shot blasted and powder coated mounted on separate axles and tow bar
Hose Reel	Single front mounted high pressure manually wound reel with 90m hose capacity
Dimensions	3500 mm Long max X 1460mm Wide X 1311 mm High.
Weight	Weight: From 750kg dry, 875kg full
Build Options	Twin front mounted high pressure hose reels, Inlet reel



e: sales@flowplant.com
 t: +44 (0)1722 325424
 f: +44 (0)1722 411329

Gemini House, Brunel Road,
 Churchfields Industrial Estate,
 Salisbury, Wiltshire. SP2 7PU
 United Kingdom