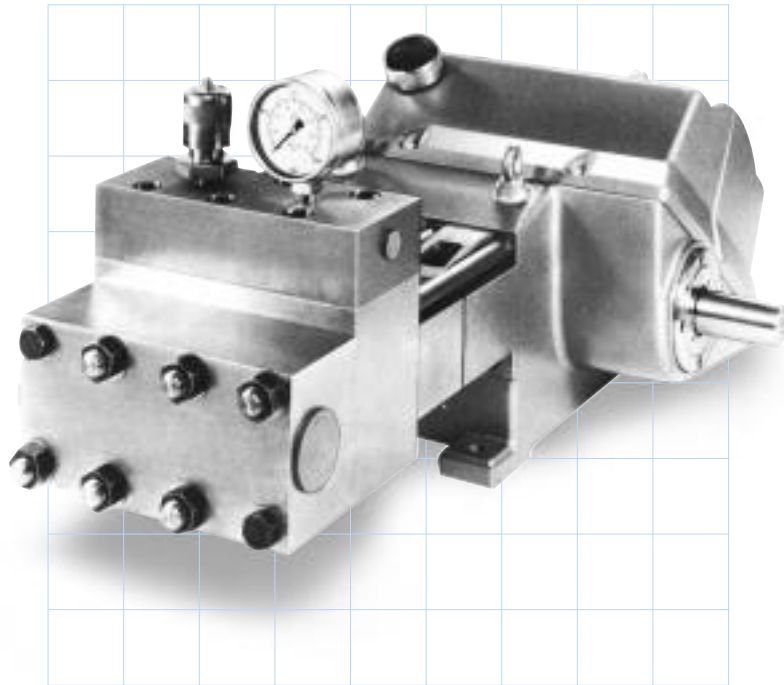
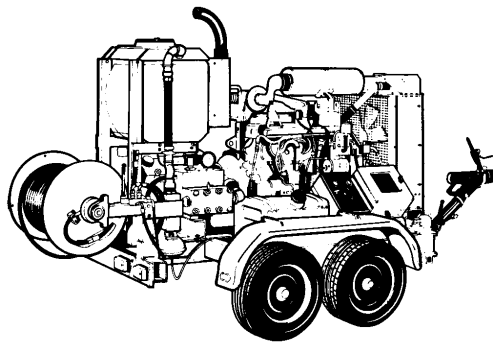


AHF 308

-one of the hydroforce range



The AHF 308 is a smooth action triplex positive displacement plunger pump designed to give constant flows at powers up to 75kW, with operating pressures from 150 to 1000 bar. A wide variation in pressures and volumes can be achieved through a simple fluid end change.



Designed to work harder

Careful design and precision engineering are prime factors in the production of this robust and reliable pump.

Maintenance is confined to routine periodic checks and oil changes. Servicing is carried out without the need for special tools, reducing downtime to a minimum.

The compact design provides a highly favourable power-to-size ratio, and the lay shaft design allows driving of the pump, through either a pulley, flexible coupling or cardan shaft.

Built to last longer

Featuring a rugged, high quality cast iron crankcase, with splash lubricated heavy duty alloy steel crankshaft, running in spherical and roller bearings which assist in minimising power losses.

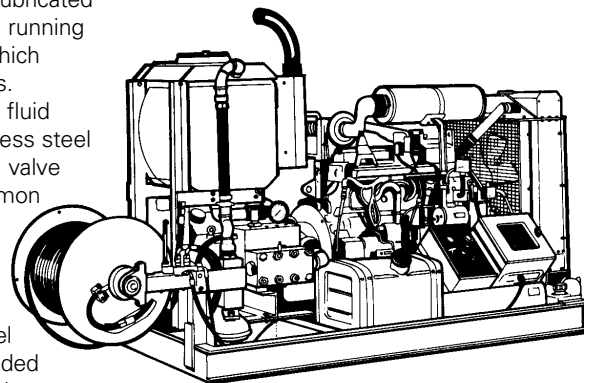
As a standard feature, the fluid head is manufactured from stainless steel and the patented* stainless steel valve and cartridge arrangements-common to both inlet end outlet-are combined in easily removeable assemblies for ease of maintenance.

Fusion coated stainless steel plungers operating in a spring loaded combination seal arrangement help to

maximise seal life.

Pump packages

Produced and packaged to suit individual user requirements, the pump can be driven by diesel engine, hydraulic or electric motor. They can be supplied for installation into new or existing plant, mounted on our standard skids, site trailers and road trailers, or in packages tailored to suit your needs.



AQUA
hydraulics

The power of water



FM 13454

Technical Data

AHF 308

Main applications

- Drain and sewer cleaning
- Pipe and tube cleaning
- Pressure testing boilers, pipes and tanks
- High pressure water jet cleaning and descaling
- Water and water abrasive surface preparation

Accessories

- Relief and unloader valves
- Pneumatically actuated valves
- Foot valves
- Jetting guns
- Sandblasting attachments
- Jetting hose
- Drain/jetting nozzles and bombs
- Accumulators

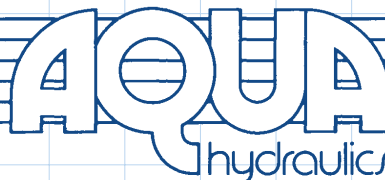
Hydroforce AHF 308 Performance

PLUNGER DIA mm	MOTOR POWER (kW)					
	75 kW		55 kW		45 kW	
	Max	Act	Max	Act	Max	Act
	PRESSURE	FLOW	PRESSURE	FLOW	PRESSURE	FLOW
	bar	L/min	bar	L/min	bar	L/min
21	1000	27.7	1000	27.7	880	28.7
25	1000	40.0	715	43.4	555	45.4
26	1000	44.3	650	48.8	505	50.6
28	825	52.4	545	56.6	430	58.4
32	610	70.7	415	74.6	325	76.4
35	495	86.8	340	90.5	270	92.2
38	410	104.7	285	108.2	225	109.9
40	365	118.0	255	121.4	200	123.1
45	280	152.4	198	155.6	158	157.2
48	245	175.3	172	178.6	138	180.1
50	220	191.5	158	194.5	127	196.0
53	195	217.2	140	220.2	112	221.7
55	180	235.7	128	238.7	104	240.1
57	165	254.7	120	257.6	95	259.1
60	145	284.9	106	287.7	85	289.1
65	120	337.9	88	340.5	71	341.9

- **Shaft diameter**
50mm (Key 14 x 9 x 80)
- **Inlet port**
2" BSP
- **Discharge ports**
1/2"-1 1/4" BSP
- **Dimensions**
L1040 W565 H420
- **Max fluid temperature**
60°C (140°F)
- **Max inlet pressure**
4.57 bar (66psi)
- **Pump weight**
391kg

All performances are nominal and based on a pump crank shaft speed of 510 rpm.
Flow indicated is maximum actual flow at zero pressure.

Flowplants' policy is one of continuous improvement and the right is reserved to revise specifications without prior notice.



e: sales@flowplant.com
t: +44 (0)1722 325424
f: +44 (0)1722 411329

Gemini House, Brunel Road,
Churchfields Industrial Estate,
Salisbury, Wiltshire. SP2 7PU
United Kingdom