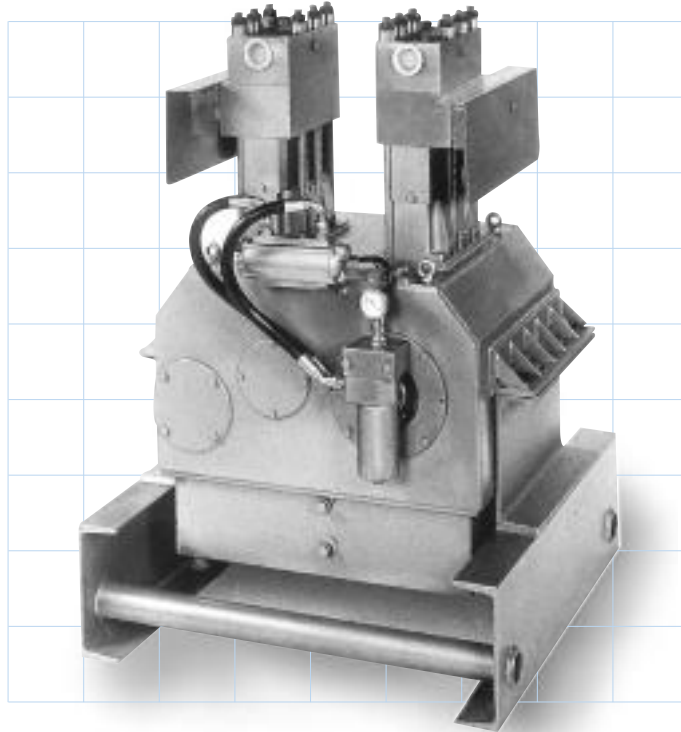


AHF 430

-one of the hydroforce range



The AHF 430 is a smooth action twin triplex positive displacement plunger pump designed to give constant flows at powers up to 220kW, with operating pressures from 150 to 1000 bar. A wide variation in pressures and volumes can be achieved through a simple fluid end change

Designed to work harder

Careful design and precision engineering are prime factors in the production of this robust and reliable pump.

Maintenance is confined to routine periodic checks and oil changes. Servicing is carried out without the need for special tools, reducing downtime to a minimum.

The compact design provides a highly favourable power-to-size ratio, and the lay shaft design allows driving of the

pump through either flexible coupling or cardan shaft.

Built to last longer

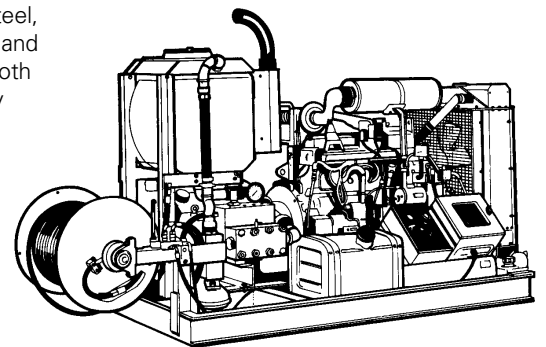
Featuring a rugged, high quality crankcase, with forced lubrication, heavy duty alloy steel crankshaft, running in spherical and roller bearings which assist in minimising power losses.

As a standard feature, the fluid head is manufactured from stainless steel, and the patented*stainless steel valve and cartridge arrangements - common to both inlet and outlet - are combined in easily removeable assemblies for ease of maintenance.

Fusion coated stainless steel plungers operating in a spring loaded combination seal arrangement help to maximise seal life.

Pump packages

Produced and packaged to suit individual user requirements, the pump can be driven by diesel engine, hydraulic or electric motor. They can be supplied for installation into new or existing plant, mounted on our standard skids, site trailers and road trailers, or in packages tailored to suit your needs.



AQUA
hydraulics

The power of water



FM 13454

Technical Data

AHF 430

Main applications

- Drain and sewer cleaning
- Pipe and tube cleaning
- Pressure testing boilers, pipes and tanks
- High pressure water jet cleaning and descaling
- Water and water abrasive surface preparation
- Hydraulic systems

Accessories

- Relief and unloader valves
- Pneumatically actuated valves
- Foot valves
- Jetting guns
- Sandblasting attachments
- Jetting hose
- Drain/jetting nozzles and bombs
- Accumulators

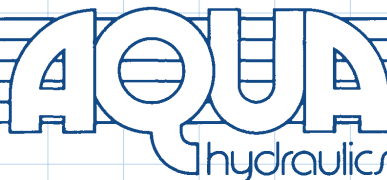
Hydroforce AHF 430 Performance

PLUNGER DIA mm	MOTOR POWER (kW)					
	225 kW		185 kW		150 kW	
	Max	Act	Max	Act	Max	Act
	PRESSURE	FLOW	PRESSURE	FLOW	PRESSURE	FLOW
	bar	L/min	bar	L/min	bar	L/min
21	1000	64	1000	64	1000	64
25	1000	93	1000	93	875	97
26	1000	102	1000	102	780	108
28	1000	120	840	126	660	132
32	800	162	615	170	495	176
35	650	199	505	207	425	211
38	540	240	420	248	340	253
40	480	270	375	278	305	283
45	370	349	290	356	240	361
48	320	402	255	408	210	413
50	295	439	235	445	190	450
53	260	498	205	505	170	509
55	240	540	190	547	155	551
57	222	584	175	590	145	595
60	195	653	155	659	125	664
65	158	774	130	779	105	784

- **Shaft diameter**
70mm (Key 20 x 12 x118)
- **Inlet port**
2" BSP
- **Discharge ports**
1/2"-1 1/4" BSP
- **Dimensions**
L785W1004H1110
- **Max fluid temperature**
60°C (140°F)
- **Max inlet pressure**
4.57 bar (66psi)
- **Pump weight**
1100kg

All performances are nominal and based on a pump crank shaft speed of 510 rpm.
Flow indicated is maximum actual flow at zero pressure.

Flowplants' policy is one of continuous improvement and the right is reserved to revise specifications without prior notice.



e: sales@flowplant.com

t: +44 (0)1722 325424

f: +44 (0)1722 411329

Gemini House, Brunel Road,
Churchfields Industrial Estate,
Salisbury, Wiltshire. SP2 7PU
United Kingdom