

# HPU - Hydraulic Power Unit

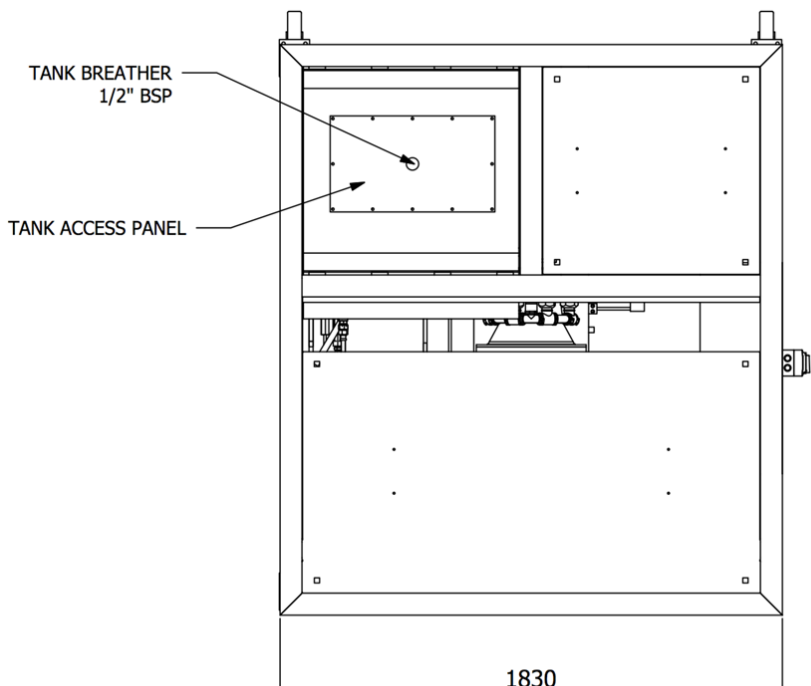
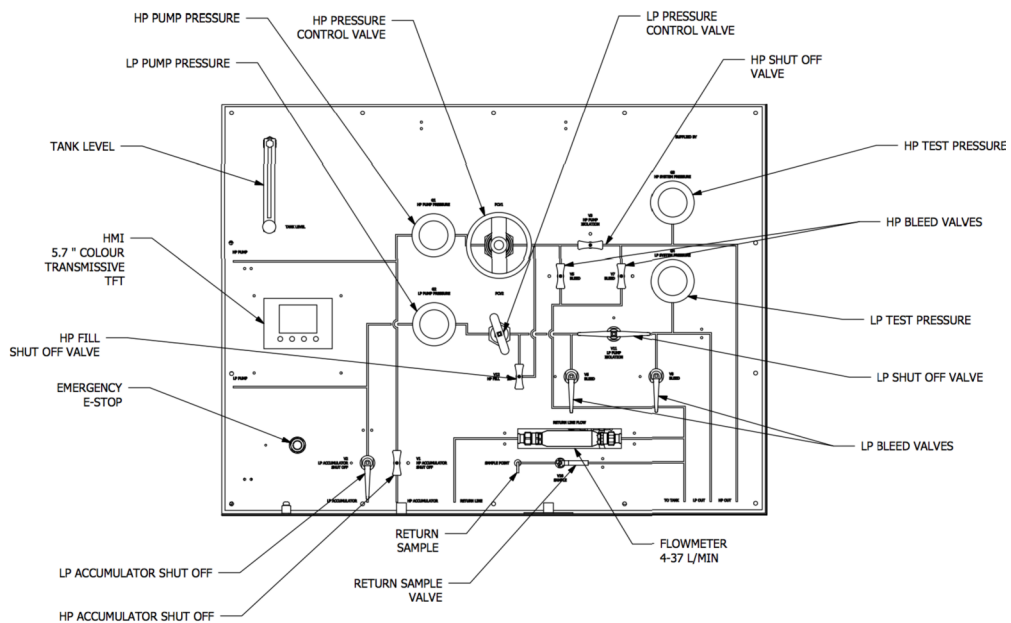
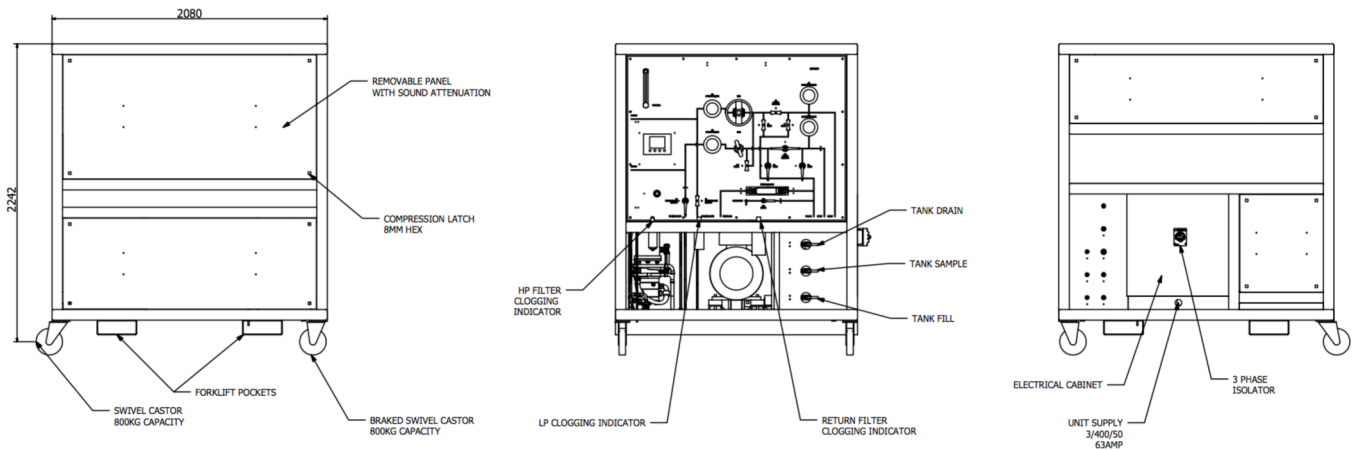


- Hydraulic Power Unit capable of supplying constant high pressure fluid supply
- Medium Flow, 20 lpm @ 365 Bar
- Low flow, high pressure, 4 lpm @ 1034 Bar
- PLC and HMI control

Model	HPU - Hydraulic Power Unit
Pressure and Flow	High flow, medium pressure: 20 lpm @ 365 Bar Low flow, high pressure: 4 lpm @ 1034 Bar
Pump	Harben® 'P' type radial piston diaphragm pump for pressures up to 365 Bar. Seal-less design suitable for pumping low lubricity fluids at high pressure. For high pressures up to 1034 Bar the swash plate water glycol piston pump can be engaged.
Motor/Starter	Motors are IP55 rated for ingress protection. The Harben® 'P' type pump is powered via an inverter driven motor, controlled via an HMI screen. The piston pump is powered via a Star/Delta 3 phase motor, controlled via an HMI screen.
Control System	Pressure and flow monitoring with the option of feedback control for the operator. There is a full touch screen with remote operation and data logging available.
Services Required	Electrical supply - 440v 3 phase 50 Hz (other options available upon request) 9 Bar air supply, flow negligible
Pressure Relief Valve	PRV set to 10% WP. Lloyd's Register certification available upon request.
Pressure Regulating Valve	Medium flow: Pressure control valve allows users to supply the required operating pressure to test the system High pressure: Downstream monitoring pressure regulating valve
Sampling	Fluid sampling on tank and return line
Accumulator	Medium pressure: 50 litres, 365 Bar bladder accumulator. Stainless steel 316 wetted parts High pressure: 20 litres, 1,034 Bar piston accumulator. Full stainless steel 316 construction
Supply Tank	250 litres supply tank manufactured from 316 stainless steel. Full temperature and level monitoring via HMI.
Cooling	Thermostatically controlled water cooled plate cooler to maintain fluid temperature
Frame	Fully enclosed sound attenuated, stainless steel trolley unit supplied with forklift pockets for easy transportation
Filtration	1,034 Bar, 3 micron high pressure filter and 40 Bar, 3 micron low pressure filter. Fitted with visual clogging indicators.
Dimensions	1800mm Long x 2080mm Wide x 2300mm High *
Weight	Dry weight: From 2215 kgs *

\*These units are bespoke to suit customer's requirements

\*\* All weights and dimensions are subject to change and should be confirmed with Flowplant at time of quotation and ordering



**Flowplant Group Ltd**

Gemini House, Brunel Road,  
Churchfields Industrial Estate,  
Salisbury, Wiltshire. SP2 7PU  
United Kingdom

t: +44 (0)1722 325 424  
f: +44 (0)1722 411 329  
e: sales@flowplant.co.uk  
w: www.flowplant.com

**High Pressure  
Cleaner Solutions**

Flowplant Group Ltd provides the information herein in good faith but makes no representation as to its comprehensiveness or accuracy. This data sheet is intended only as a guide to Flowplant Group Ltd products and services. Individuals using this data sheet must exercise their independent judgment in evaluating product selection and determining product appropriateness for their particular purpose and system requirements. Flowplant Group Ltd MAKES NO REPRESENTATIONS OR WARRANTIES, EITHER EXPRESS OR IMPLIED, INCLUDING WITHOUT LIMITATION ANY WARRANTIES OF MERCHANTABILITY OR FITNESS FOR A PARTICULAR PURPOSE WITH RESPECT TO THE INFORMATION SET FORTH HEREIN OR THE PRODUCT(S) TO WHICH THE INFORMATION REFERS. ACCORDINGLY, Flowplant Group Ltd WILL NOT BE RESPONSIBLE FOR DAMAGES (OF ANY KIND OR NATURE, INCLUDING INCIDENTAL, INDIRECT, OR CONSEQUENTIAL DAMAGES) RESULTING FROM THE USE OF OR RELIANCE UPON THIS INFORMATION. Flowplant Group Ltd reserves the right to change product designs and specifications without notice.