

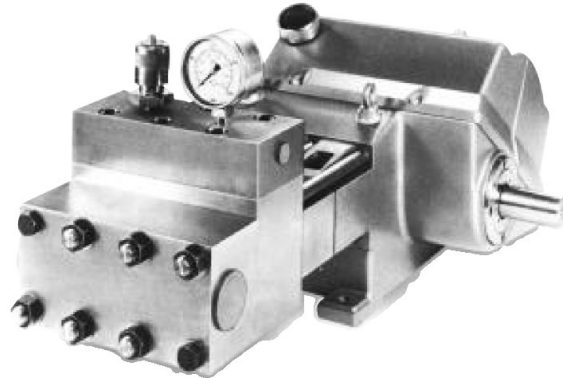
AQUA AHF 308

Main Applications

- Drain and sewer cleaning
- Pipe and tube cleaning
- Pressure testing boilers, pipes & tanks
- High pressure water jet cleaning & descaling
- Water and water abrasive surface preparation

Accessories

- Relief and unloader valves
- Pneumatically actuated valves
- Foot valves
- Jetting guns
- Sandblasting attachments
- Jetting hose
- Drain/jetting nozzles and bombs
- Accumulators



- **Shaft diameter**
50mm (key 14 x 9 x 80)
- **Inlet port**
2" BSP
- **Discharge ports**
½" - 1 ¼" BSP
- **Dimensions**
L1040 W565 H420
- **Max fluid temperature**
60°C (140°F)
- **Max inlet pressure**
4.57 bar (66psi)
- **Pump Weight**
391kg

Flowplant Group Ltd

Gemini House, Brunel Road,
Churchfields Industrial Estate,
Salisbury, Wiltshire. SP2 7PU
United Kingdom

t: +44 (0)1722 325 424

f: +44 (0)1722 411 329

e: sales@flowplant.co.uk

- High Pressure
- Cleaner Solutions

Performance

PLUNGER DIA mm	MOTOR POWER (kW)					
	75 kW		55 kW		45 kW	
	Max	Act	Max	Act	Max	Act
	Pressure	Flow	Pressure	Flow	Pressure	Flow
	Bar	L/min	Bar	L/min	Bar	L/min
21	1000	27.7	1000	27.7	880	28.7
25	1000	40.0	715	43.4	555	45.4
26	1000	44.3	650	48.8	505	50.6
28	825	52.4	454	56.6	430	58.4
32	610	70.7	415	74.6	325	76.4
35	495	86.8	340	90.5	270	92.2
38	410	104.7	284	108.2	225	109.9
40	365	118.0	255	121.4	200	123.1
45	280	152.4	198	155.6	158	157.2
48	245	175.3	172	178.6	138	180.1
50	220	191.5	158	194.5	127	196.0
53	195	217.2	140	220.2	112	221.7
55	180	235.7	128	238.7	104	240.1
57	165	254.7	120	257.6	95	259.1
60	145	284.9	106	287.7	85	289.1
65	120	337.9	88	340.5	71	341.9

All performances are nominal based on a pump crank shaft speed of 510 rpm
Flow indicated is maximum actual flow at zero pressure

Flowplants' policy is one of continuous improvement and the right is reserved to revise specifications without prior notice.

