

Flowplant Diesel Engine Driven Water Jetting Units

From the latest range of Flowplant high pressure jetting equipment

- Working pressure up to 1500 bar
- Designed and built in the UK
- Diesel engine driven
- Skid mounted
- Options for trailer mounted units



Model	Diesel Engine Driven High Pressure Water Jetting Unit
Pressure and flow	Up to 1500 bar (21,755psi), up to 180 litres/min (39.6 UKgpm)
Pump	HPP triplex plunger pump, with pressure lubricated crankcase and gearbox
Pressure regulating valve	Option for a regulating valve or unloader valve, to allow full pressure adjustment
Engine	Stage 3 or Stage 5 industrial diesel engine, to meet local emissions regulations. Variable speed
Water tank	Inlet water header tank, complete with an inlet filter, float valve to prevent overfilling, a low level alarm and a drain valve
Boost pump	Belt driven centrifugal pump provide 3-5 bar inlet water pressure to the triplex plunger pump to help prevent cavitation
Inlet water filter	High quality inlet water filter provides clean water supply to reduce pump maintenance requirements
Dimensions & weight	2650mm x 1400mm x 1900mm high. 2,375 kgs <i>(weights and dimensions are approximate)</i>
Suggested Accessories	½" high pressure water jetting hose Dry shut or dump type water jetting gun, complete with 1200mm lance Round jet, fan jet, or rotary jetting gun nozzles Hose protection shroud Personal protective equipment for operator safety

This is just one of the many products available from the Flowplant range of high pressure water jetting units. Ask us about our other equipment or visit www.flowplant.com for more information. A full range of accessories are available on request from Flowplant

Flowplant Group Ltd

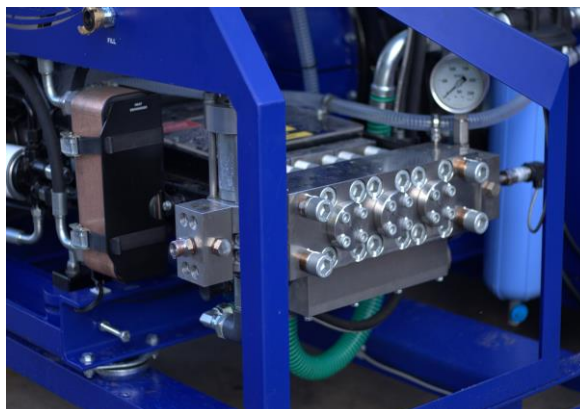
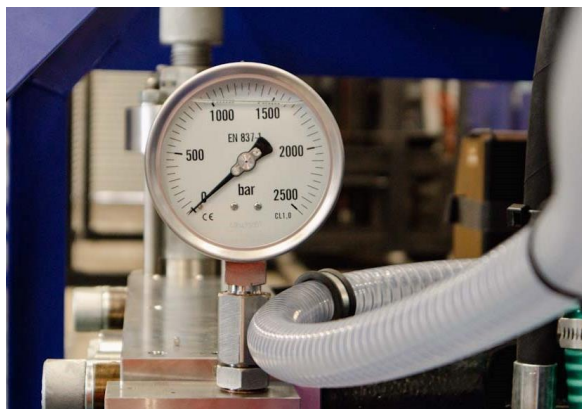
Gemini House, Brunel Road, Churchfields Industrial Estate, Salisbury, Wiltshire. SP2 7PU, United Kingdom

Tele: +44 (0)1722 325424

Email: sales@flowplant.com

Web: www.flowplant.com

Flowplant Diesel Engine Driven Water Jetting Units



Various site trailer or road trailer options available.



Flowplant Group Ltd

Gemini House, Brunel Road, Churchfields Industrial Estate, Salisbury, Wiltshire. SP2 7PU, United Kingdom

Tele: +44 (0)1722 325424

Email: sales@flowplant.com

Web: www.flowplant.com